

- 01 Deco Wall Perimeter Dimensions Front, Side, Top, Iso.
 DW - Build Four 1-1/4"=1'
 - Build with 1x material ripped to 3"
 - See Plate DW02-05 for other dimensions/instructions
 - Use glue and narrow crown staples
 - This wall does not get faced, remove any irregularities once completed (protruding staples, etc...)

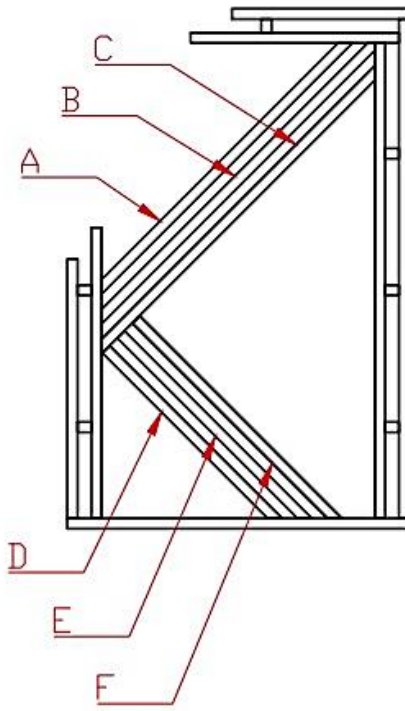


Murder on the Orient Express

NAME	Carina Thompson
DESIGN	Dawn Henselich
TOP JOB	Diana White
JOB BY	Sophia Eckhauser
PL DATE	6 / 16 / 22
JOB	Murder Pickup 7.25.22
REMARKS	As Noted

FINISH BY:

DW-01



03

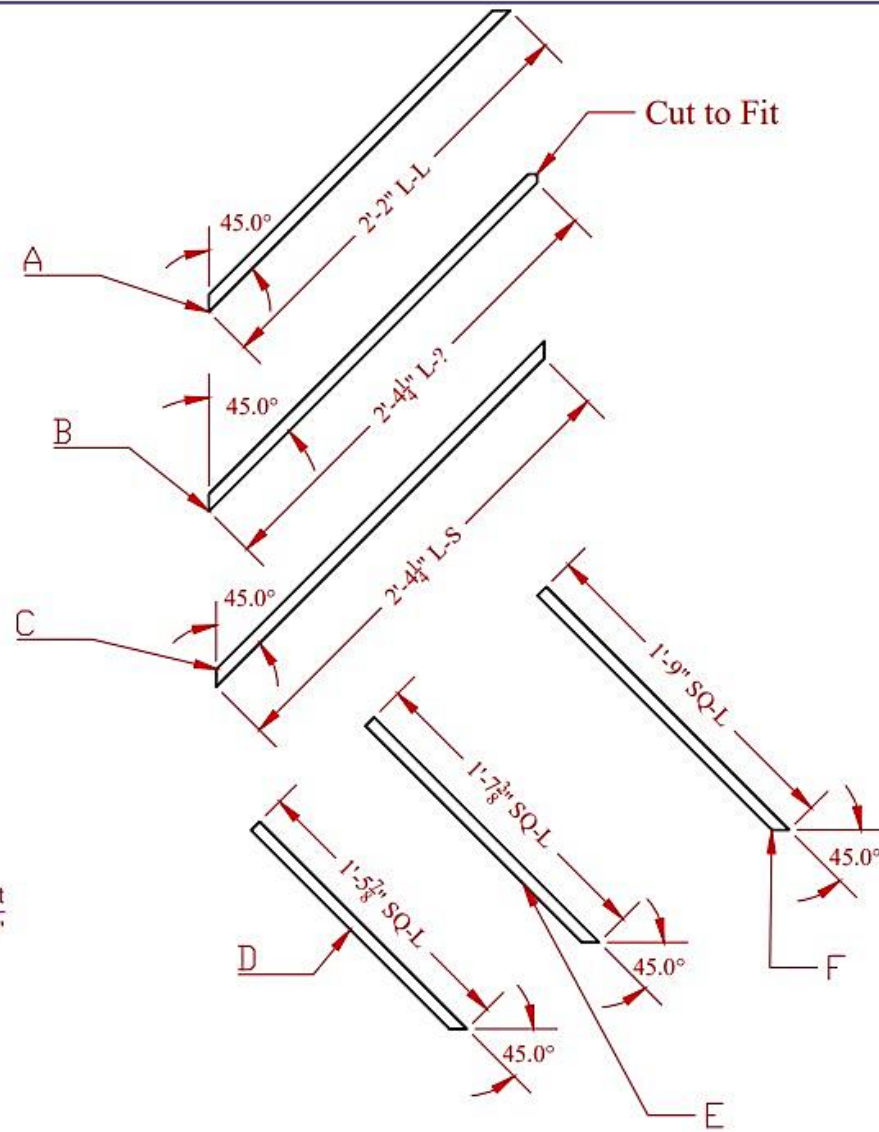
Deco Wall Decorative Dimensions

Front

DW

- The space between each stick is $\frac{13}{16}$ " , this measurement differs where stick meets side walls (the ends of these sticks)

$1-1/4"=1'$



04

Deco Wall Decorative Dimensions

Front

DW

- Unlabeled ends of pieces A and C match provided angle

$1-1/2"=1'$



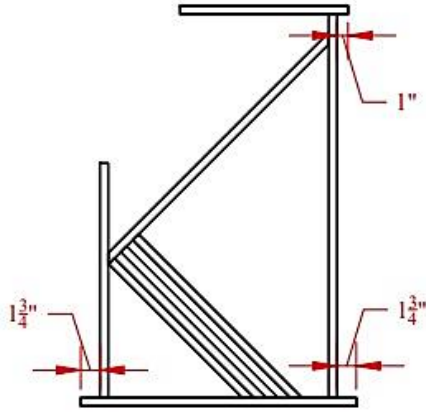
Murder on the Orient Express

Deco Wall

DESIGN	Kathy Thompson
ARCHITECT	Clara Henschel
TOP OP	Clara White
REV BY	Sophie Fokvaert
REV DATE	6/16/22
PROJECT	Murder Package 7.0.010
NOTES	As Noted

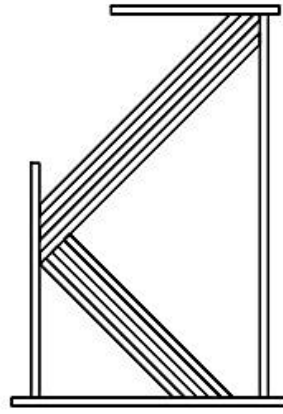
FINISH BY:

DW03-04



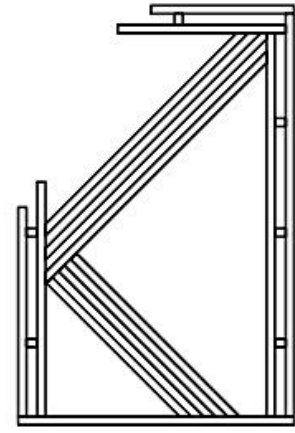
1

Start with interior frame, and pieces C, D, E, F



2

Add in pieces A and B



3

Add exterior frame and toggles

05
DW

Deco Wall Build Order

Front

- This drawing shows what order this could be built in, for ease of construction, if done in another order it may be difficult to attach pieces together
- Reminder that this wall does not get faced, staples cannot be sticking out anywhere
- See TD/ATD for final instructions, (needs one applique piece)

1"=1'



Murder on the Orient Express

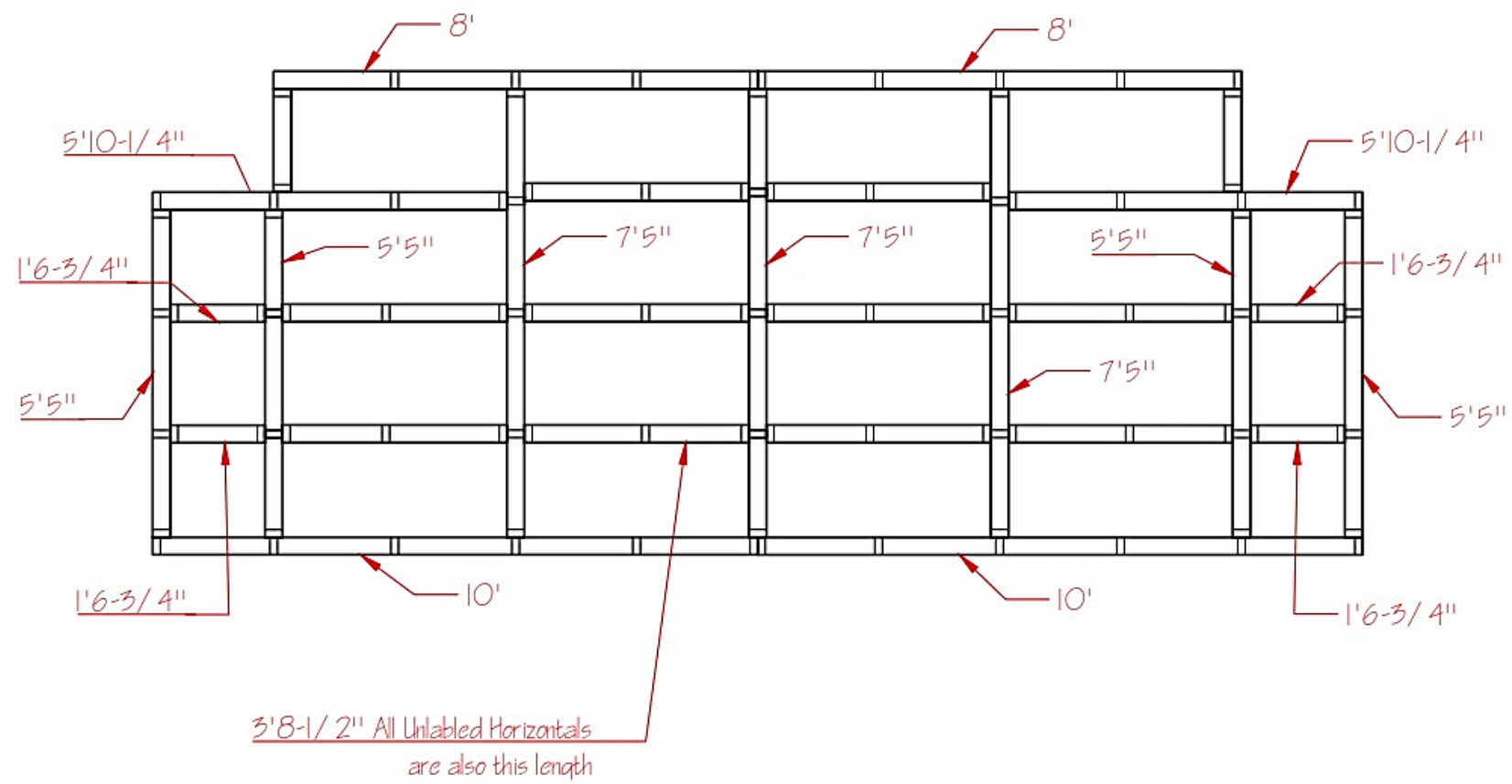
Deco Wall	
DESIGNER	Leana Thompson
OWNER	Dani Henschel
DATE	June White
BY	Stephie Eschauer
DATE	6/16/22
PROJECT	Murder Package 7.21.20
SCALE	As Noted

FINISH BY:

DW-05



Murder on the Orient Express



01
RPF

Rolling Platform Framing Top
 - This view shows both visible and hidden lines 1/2"=1'
 - Ensure that the three middle studs running US-DS are in the correct position as toggle placements differ
 - Screw together, lid, add caster boards
 - Unit is mirrored down center (US-DS)

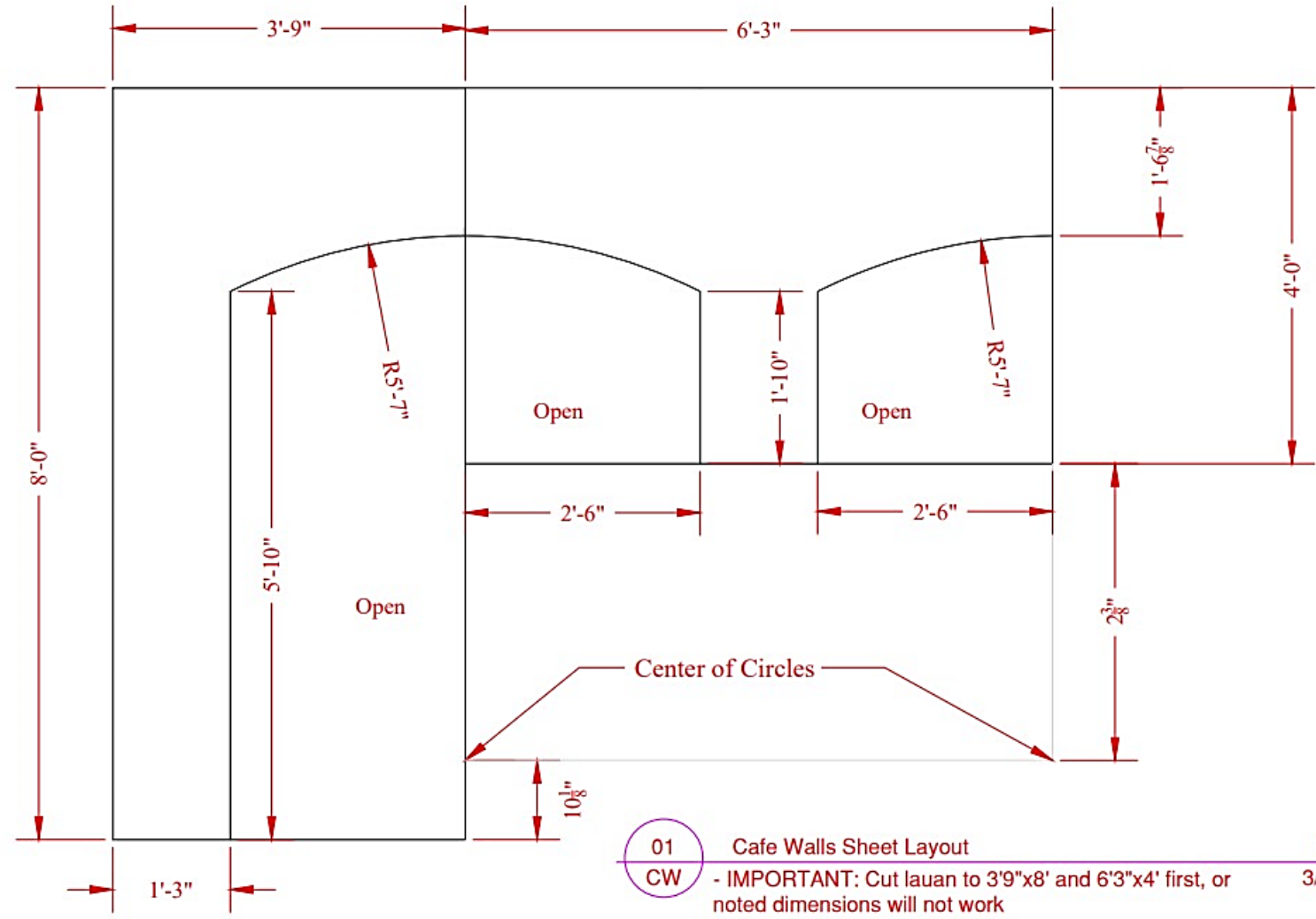
Rolling Plat. Frame
DESIGNED: Kerlu Thompson
DESIGNED: Dawn Hemench
DESIGNED: Dana White
DESIGNED: Sophie Rodriguez
DATE: 6/16/22
FILE: Murder Working 8.29.dwg
SCALE: As Noted

FINISH BY:

RPF



Murder on the Orient Express



01
CW

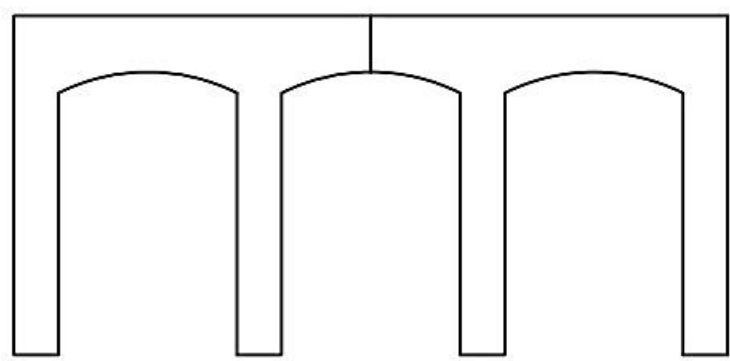
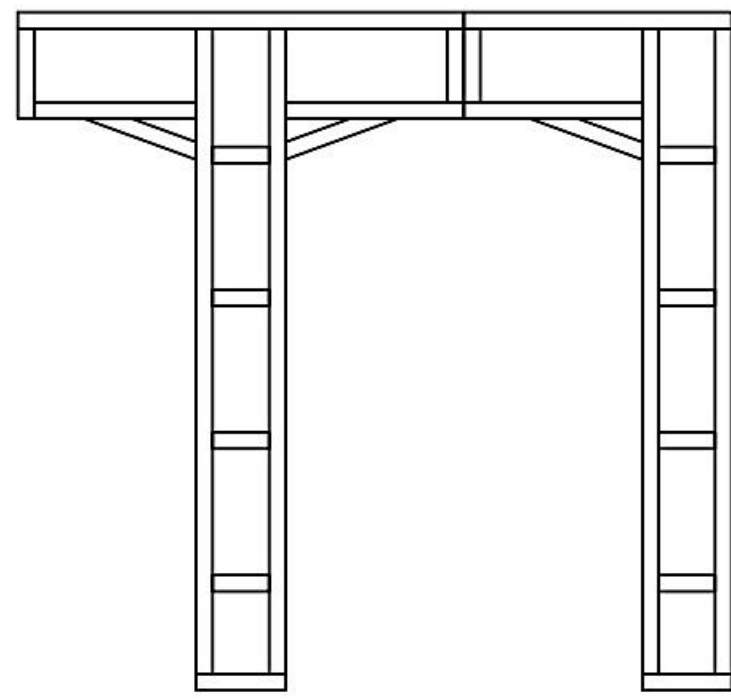
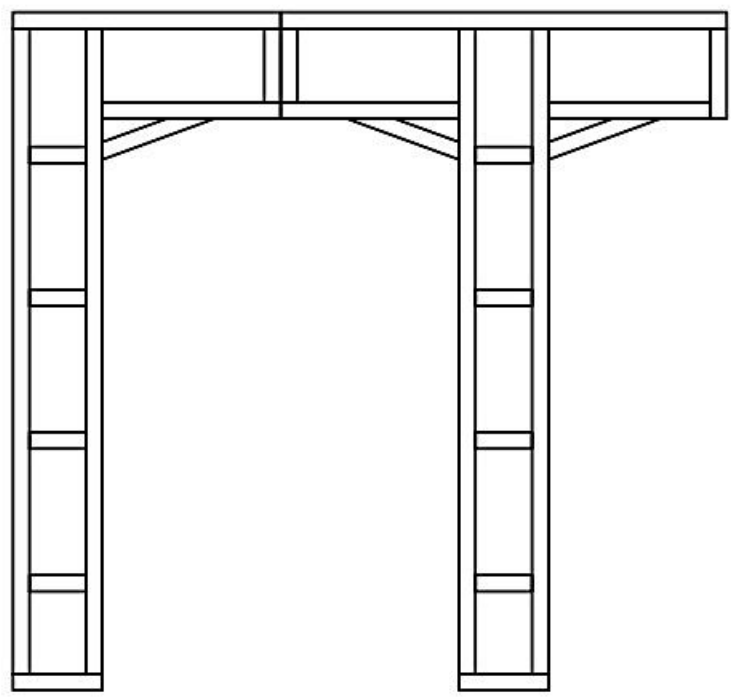
- Cafe Walls Sheet Layout Front
- IMPORTANT: Cut lauan to 3'9"x8' and 6'3"x4' first, or 3/4"=1'
 - noted dimensions will not work
 - Cut TWO of each piece (R&R)
 - Lay lauan out together to draw in the arches, use radius and center points provided
 - Cut with jigsaw and save excess to face the rest of the flat

Cafe Wall St.	
DESIGNER	Kerby Thompson
DESIGNER	Lynn Hammerich
TEXT WR	Patsy White
DATE	6/16/22
FILE NAME	Murder Workno 6.29.dwg
SCALE	As Noted

FINISH BY:

CW-01

Murder on the Orient Express



04
CW

Cafe Wall Composite Frames
 - Cut straps to hold top of flats together, label, set aside with other completed scenery
 - Strap size needs to be for above configuration
 - See TD/ATD for rigging hardware instructions

Front
1/2"=1'

05
CW

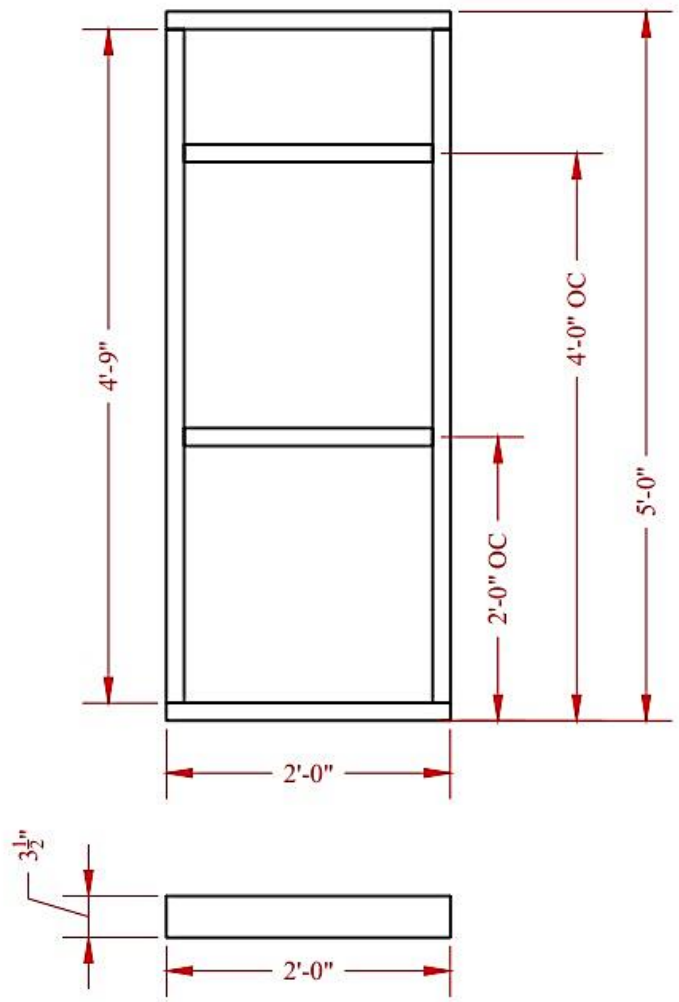
Cafe Wall Composite
 Front
1/4"=1'

Cafe Wall Composite	
DESIGNER	Carly Thompson
SCENERY	Dana Himmerich
TECH DIR	Dana White
DIR	Joseph Rodriguez
FLT DIR	6/16/22
DATE	Murder Workshop 6.29.2022
REMARKS	As Noted

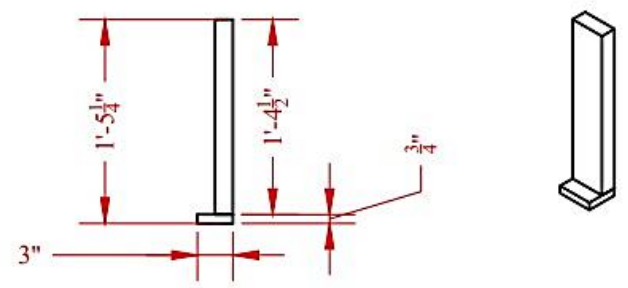
FINISH BY:

CW-04

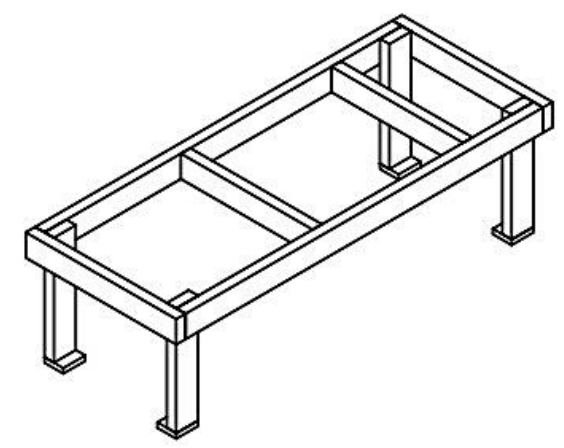
Murder on the Orient Express



01 Bed Frame Top, Front Side
 BD - Constructed from stock platforms, rip down to size and add toggles 1"=1'
 - Repeat for a total of three platforms
 - Construct with 2"x4"



02 Bed Frame Legs Side, Iso.
 BD - Construct legs from 2"x4" 3/4"=1'
 - Foot pads are cut from plywood
 - Use glue and screws to attach foot pad to leg
 - Construct four per platform (12 total)



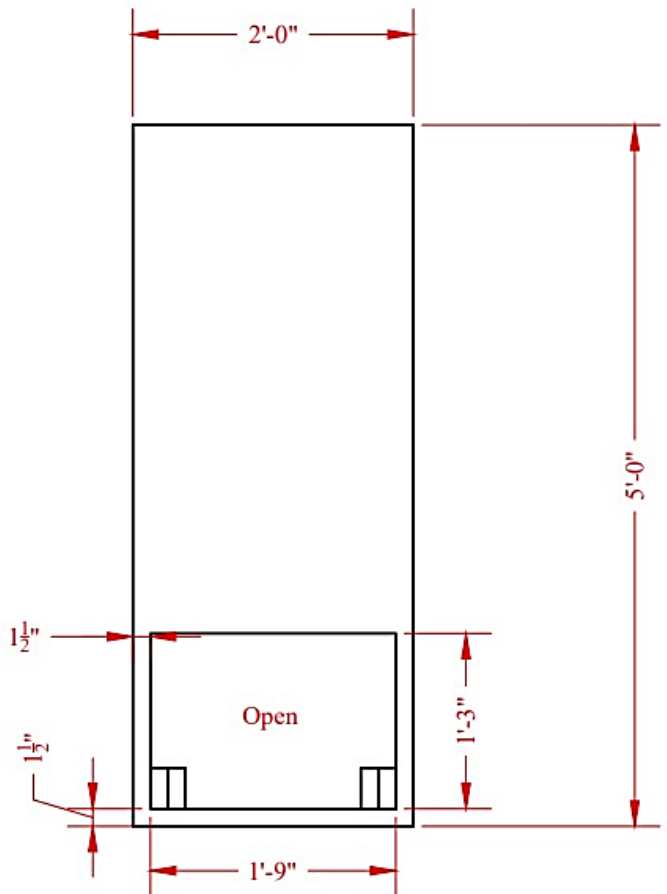
03 Bed Frame Composite Iso.
 BD 3/4"=1'

Bed Frame	
DESIGNER	Kathy Thompson
SENDER	Darin Himmertich
TECH REP	Fiona Winter
DWG BY	Stephan Eckhauer
PLT DATE	11/01/22
DATE	Murder Workshop @ 29 days
SCALE	As Noted

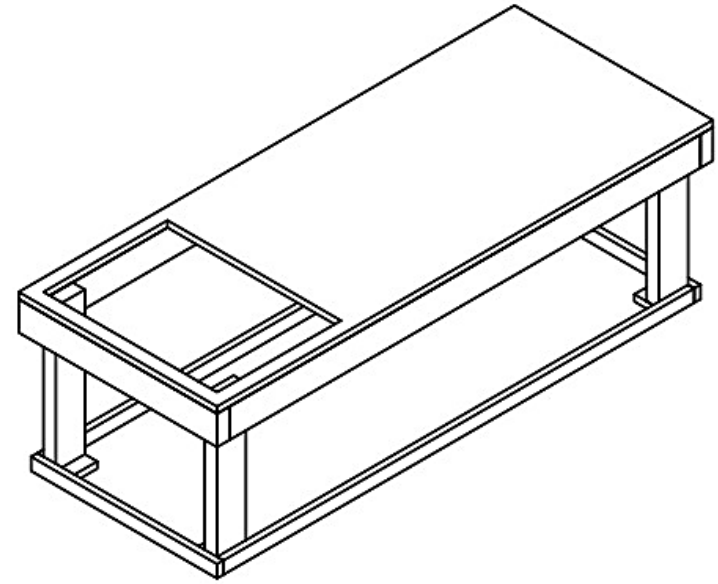
FINISH BY:

BD01-03

Murder on the Orient Express



04 Bed Frame Lid Top, Front Side
 BD - Cut rectangular hole into existing lid 1"=1'
 - Gently sand cut edges of hole, and tops of legs



05 Bed Frame Composite Iso.
 BD - Bottom frame is ply ripped to 1-1/2" 1"=1'
 - Longer lengths are 4'9"
 - Shorter lengths are 1'10-1/2"
 - Attach to platform frame

Bed Composite	
DESIGNER	Kerby Thompson
DESIGNER	Darin Pimmerich
TEXT BY	Dana White
DWG BY	Sophie Roubicek
PLT DATE	7/16/22
FILE	Murder Working 6.25.dwg
SCALE	As Noted

FINISH BY:

BD04-05